



PFM

Motorized Floating Bridge



PFM World Class Floating Bridge

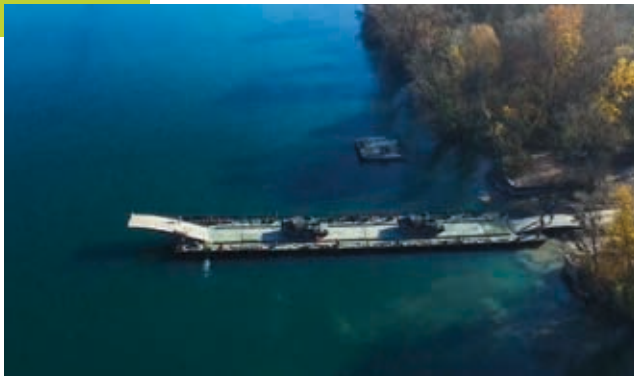
Easy and safe launching & assembly

Motorized modules. No auxiliary boats.



3 Crossing modes for flexible ops

Tactical



Ferry

Logistical



Bridge

Short gap



Ramp

Expeditionary Ops



MINIMUM STAFF OPTIONS >

Module remote control unit

/ 33 men instead of 42

to build a 100 m long bridge

Short ramp integrated on module

/ 2 trucks instead of 4

to build a 20 m long ferry





▲ All vehicles cross up to MLC 70T/80W



Canon Caesar (French Army) on 30m long bridge



Civilian use



Two Leclerc tanks on ferry 6+2



Loaded Leclerc tank carrier on 160m long bridge

CROSSING SITE FLEXIBILITY >
natural bank adaptability,
 brackish water

SAFE CROSSING >
 day & night operations,
rigid pontoon,
 high fatigue resistance,
 powerful engines for
strong current
 resistance (up to 3,5 m/s)

EASY BUILDING >
 controlled launching with crew
 on-board, **motorized modules**

Type	Modules + Ramps	MLC	Gap max.	Gap min.	Crew	Building Time
Pont	9+2	MLC 70T/80W	106 m	90 m	42	30 min
Ferry	4+2	MLC 70T/80W	56 m	40 m	24	20 min
Expeditionary Ferry	2+2	MLC 40T/40W	26 m	20 m	6	10 min

Both a bridge and a ferry, the PFM is a multipurpose tactical bridging solution for dry and wet gap crossing.

Key performances



MLC 70T/80W



Set-up time: 30 min
100 m long bridge, 42 men



Crossing flow: 250 vehicles / hour

Technical Specifications

Module

Length	10.00 m
Width stowed	3.60 m
Width deployed	10.20 m
Height stowed	2.10 m
Height deployed	1.30 m
Weight	10,5 tons
Track width	4.00 m
Payload capacity of one module	20 tons

Access Ramp

Length: long ramp = 12.5 m short ramp = 3.5 m
Track width: long ramp = 4 m short ramp = 3.5 m
Civilian vehicle kit
Tactical Airlift



HEADQUARTERS
35, rue de Bassano
75008 Paris
France
contact@cnim.com

www.cnim.com